



NATIONAL LEVEL SCIENCE TALENT SEARCH EXAMINATION

CLASS - 2

Question Paper Code : 1P214

KEY

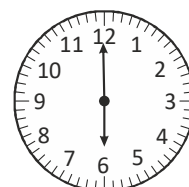
1. B	2. B	3. A	4. C	5. C	6. D	7. B	8. C	9. D	10. A
11. B	12. B	13. D	14. B	15. D	16. D	17. B	18. C	19. C	20. C
21. D	22. C	23. B	24. B	25. C	26. A	27. A	28. B	29. A	30. C
31. D	32. B	33. C	34. D	35. C	36. B	37. B	38. B	39. A	40. D
41. B	42. D	43. C	44. B	45. B	46. A	47. A	48. A	49. B	50. D

SOLUTIONS

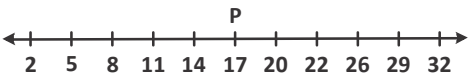


MATHEMATICS

01. (B) Petals left on one flower: $6 - 2 = 4$
Petals left on 5 flowers: $5 \times 4 = 20$
02. (B) (A) $50 + 60 = 110$
(B) $160 + 44 = 204$
(C) $500 + 200 = 700$
(D) $400 + 100 + 46 = 546$
03. (A) Cones: 9
Spaces between cones: $9 - 1 = 8$
Distance each space: 7 m
Total distance: $8 \times 7 = 56$ m

04. (C) $\square = 4$; $\triangle = 7$
 $7 - 4 = 3$



05. (C)
06. (D) R is 18 units from P
Q is 5 units left of R \rightarrow Q is 13 units from P ($18 - 5$)
Distance from Q to S = 20 units
Distance from P to S = $13 + 20 = 33$ units

07. (B) Roll numbers: 1 to 60
Even numbers: 2, 4, 6, ..., 60
Count of even numbers = $60 \div 2 = 30$
08. (C)
$$\begin{array}{r} 602 \\ - 328 \\ \hline 274 \end{array}$$
09. (D) There are 27 children. Each packet has 6 cakes.
4 packets = 24 cakes \rightarrow not enough
5 packets = 30 cakes \rightarrow enough
10. (A) 3 apples = 3×2 apricots = 6 apricots
6 apricots = 6×4 cherries = 24 cherries
11. (B) 
12. (B) 

13. (D) Box A + Papaya = 6 kg
Box A + Box B + Papaya = 10 kg
Box B = 10 kg – 6 kg
Box B = 4 kg
14. (B) 1 bottle = 1 liter
Jug can hold = 2 liters
3 bottles = 3 liters
Jug gets full with 2 liters \rightarrow 1 liter left
This 1 liter will spill out
15. (D) Ravi gets Rs. 2 back
Sita gets Rs. 8 back
Sita gets 6 rupees more than Ravi.
16. (D) Each tray = 12 eggs $\rightarrow 3 \times 12 = 36$ eggs
17. (B) Difference = $7 - 5 = 2$
18. (C) $56 \div 7 = 8$, $36 \div 6 = 6$,
 $81 \div 9 = 9$, $35 \div 5 = 7 \rightarrow$ largest is 9
19. (C) Cube has flat faces \rightarrow cannot roll
20. (C) Numbers between = 752, 764, 774 \rightarrow smaller than 760 = 752

GENERAL SCIENCE

21. (D) Animals like squirrels, rats, and rabbits have sharp gnawing incisors used to eat fruits and nuts.
22. (C) Ginger is a modified underground stem called as a rhizome.
23. (B) The skeletal system gives shape and support to the human body.
24. (B) The nervous system controls and coordinates the activities of all other body systems.
25. (C) The brain is the main control center of the body and regulates body functions.
26. (A) Lions live in caves or dens forest and shelter.
27. (A) Goat is a domestic animal that is reared by humans for milk, meat, and other uses.
28. (B) Taking a bath daily is a good habit that helps to maintain personal hygiene and health.
29. (A) Study tables and chairs are made from wood obtained from trees.
30. (C) A panther belongs to the cat family and is most similar to a cat.
31. (D) For burns, first aid includes applying ice (cold) and covering with a clean bandage.
32. (B) The given plant is a climber (like pea). Grapevine is also a climber, so it belongs to the same group.
33. (C) Cow, goat, dog, and cat are all domestic animals kept by humans.
34. (D) A caravan is a house on wheels used for travel and living.
35. (C) Milk is called a complete food as it helps in growth, provides energy, and protects from diseases.
36. (B) Rain and dew are liquid states of water; water vapour is gas and snow is solid.
37. (B) 1 \rightarrow Coal (iv)
2 \rightarrow Slate (i)
3 \rightarrow Talc (ii)
4 \rightarrow Graphite (iii)

- | | |
|---|---|
| <p>38. (B) (bread), II (leafy vegetable), and V (jam) are obtained from plant sources. Egg and butter are animal products, and salt is a mineral.</p> <p>39. (A) All living organisms require nutrition, perform respiration, and reproduce. Photosynthesis is not performed by all living organisms.</p> <p>40. (D) Many plants also grow from stems, roots, tubers etc., not only from seeds.</p> <p>41. (B) Mango is a fruit and fruits develop from the flower of a plant.</p> <p>42. (D) Bear, crow and cockroach are omnivores, so they eat both plant and animal parts.</p> <p>43. (C) Sam – cleaned with water and used as a bandage.</p> | <p>44. (B) Steam rising into the air.</p> <p>45. (B) They become part of the soil.</p> <p>46. (A) Silica
Glass is made mainly from silica, which comes from sand.</p> <p>47. (A) Granite is a hard and durable rock, making it ideal for construction uses like roads, countertops, and buildings.</p> <p>48. (A) Cotton plant</p> <p>49. (B) Water is vital for digestion, nutrient transport, and temperature control in all living things.</p> <p>50. (D) Fruits and vegetables are protective foods. Both animals and plants are sources of food.</p> |
|---|---|

===== *The End* =====